



LOS ANGELES HISTORIC THEATRE FOUNDATION

Dear {{patron_first_name}},

While we take a pause in our weekend *Coffee & Conversation* series to work on the next few events for you, I wanted to update you on advocacy issues affecting historic theatres in LA County. Whereas things have slowed-down during the pandemic situation, we do have a few updates to report.

As a volunteer Board covering all of LA County, we rely on your eyes and ears to assist us in identifying issues affecting our historic theatres. Please don't hesitate to contact me if you have a tip, see something or hear something, or have concerns about a historic theatre.

For now, stay well, and we look forward to connecting with you at our next free *Coffee & Conversation* on Saturday 22nd August: [Exploring the American Cinema with special guest Ross Melnick!](#)

Mike Hume - Board of Directors

Avalon Theatre, Catalina



Following the closure of the Avalon Theatre as a first-run movie house at the start of the year, and prior to the arrival of the novel coronavirus, the Catalina Island Company and the City of Avalon were in negotiations regarding a City-run monthly community movie night.

The impact of the coronavirus on the island community, particularly because of tourism being drastically reduced, has been devastating and we understand that negotiations are currently on hold.

LAHTF will provide updates as things progress. In the meantime, [the petition to keep the theatre open](#) is still open should you wish to sign it.

Crest Westwood



LAHTF has reviewed UCLA's draft proposals for renovation of the Crest Westwood which include renaming it as the Nimoy Theater. A draft conceptual drawing of the renovated interior is included above.

In late June it came to LAHTF's attention that urban explorers had gained access to Crest Theatre. Prompt communication by ourselves with UCLA ensured that the property is now once again secure.

Eagle Theatre, Eagle Rock



Vidiots, new long-term lessees of the Eagle Theatre in Eagle Rock, opened in 1929 as the Yosemite Theatre, have been using their lockdown time to craft their plans for the theatre and adjoining spaces. The non-profit is also currently fundraising for renovations and operations and inviting Founding Members to support the organization.

The current plan is to open to the public in Spring 2021, with a DVD/BluRay rental store alongside an independent movie theatre (including 35mm film projection capability) and lobby offering beer, wine, concessions, and small bites.

With support for Vidiots from the Chamber of Commerce and the Eagle Rock Association, the Eagle Rock Neighborhood Council recently voted unanimously in favor of granting Vidiots extended weekend opening hours and a beer and wine permit.

Grand Theater, LATTCC



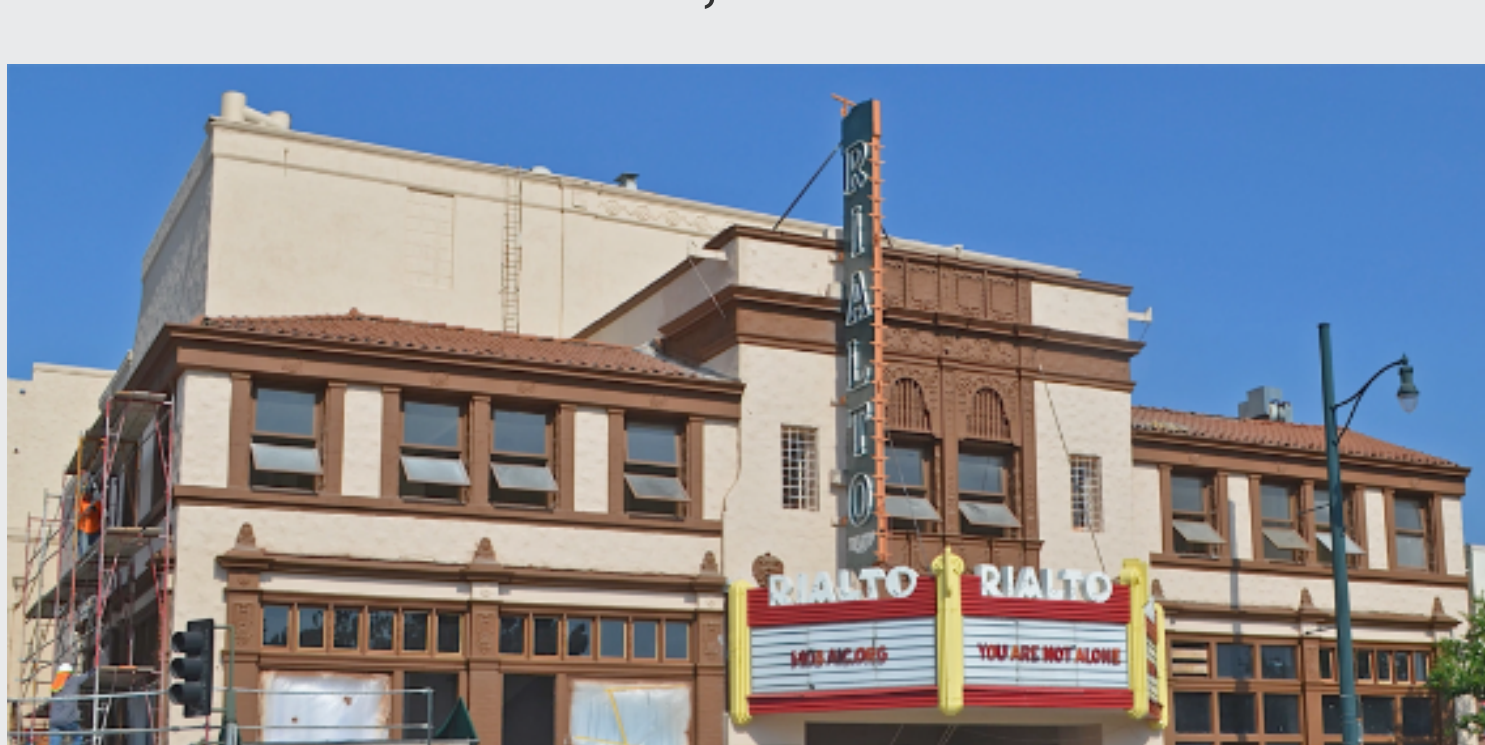
The Grand Theater, a 2,000-seat theatre designed by Albert C. Martin (Million Dollar Theatre building, LA City Hall) opened in mid-1925, sits on the campus of the LA Trade Technical College (LATTCC) just south of downtown. The side of the theatre building is clearly visible from the Grand/LATTCC Metro station.

In the fall of 2019 LATTCC intimated their intention to demolish the theatre along with another building on campus. LAHTF strongly opposes the demolition.

While the Grand Theater still stands as of mid-2020, repeated requests to LATTCC for updates on their proposed demolition project have gone unanswered.

LAHTF continues to monitor the situation and will keep trying to reach LATTCC for updates.

Rialto Theatre, South Pasadena

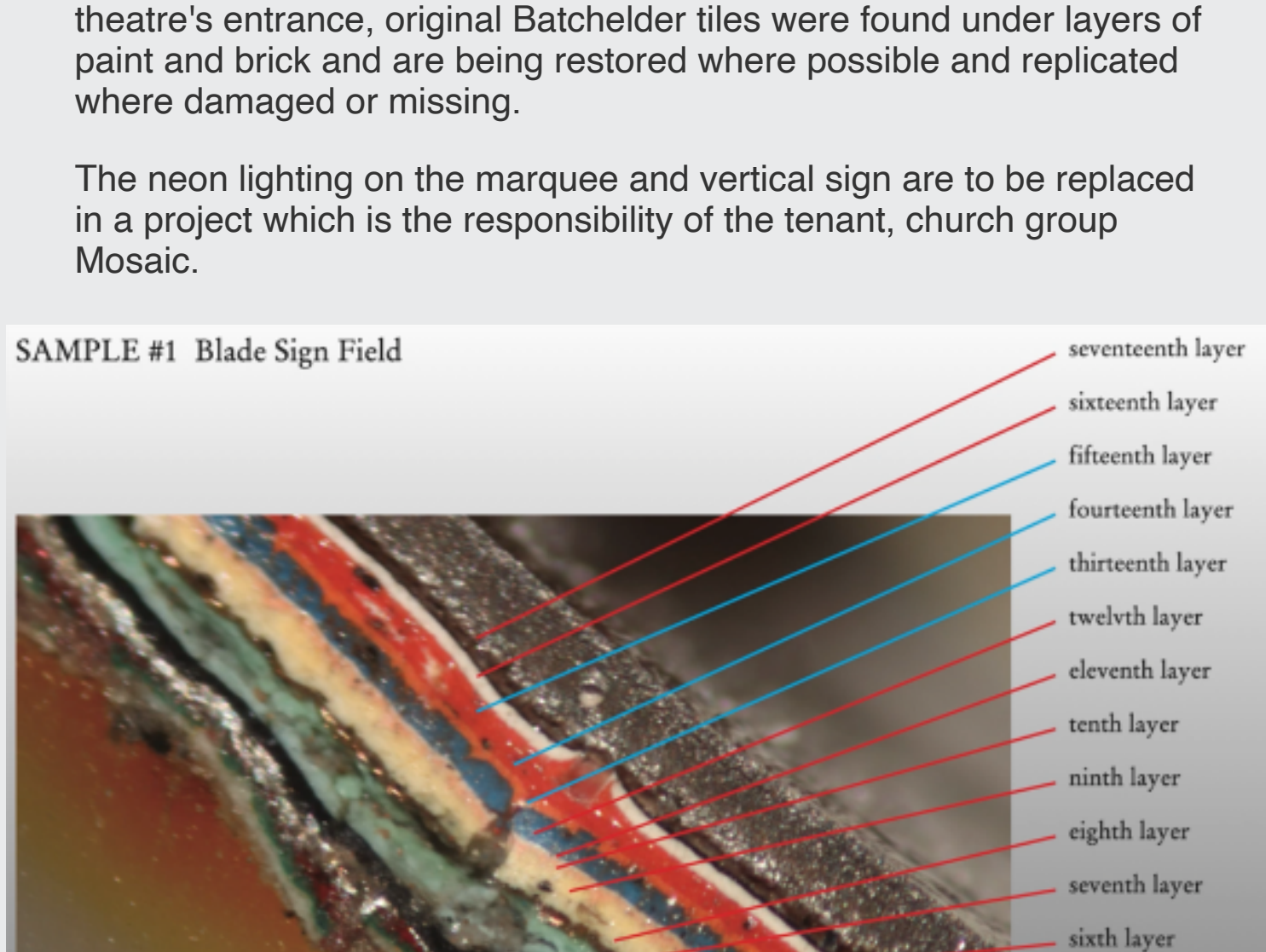


Owners of the Rialto Theatre have been working on an exterior makeover, including restoration of the vertical sign and 1940s marquee.

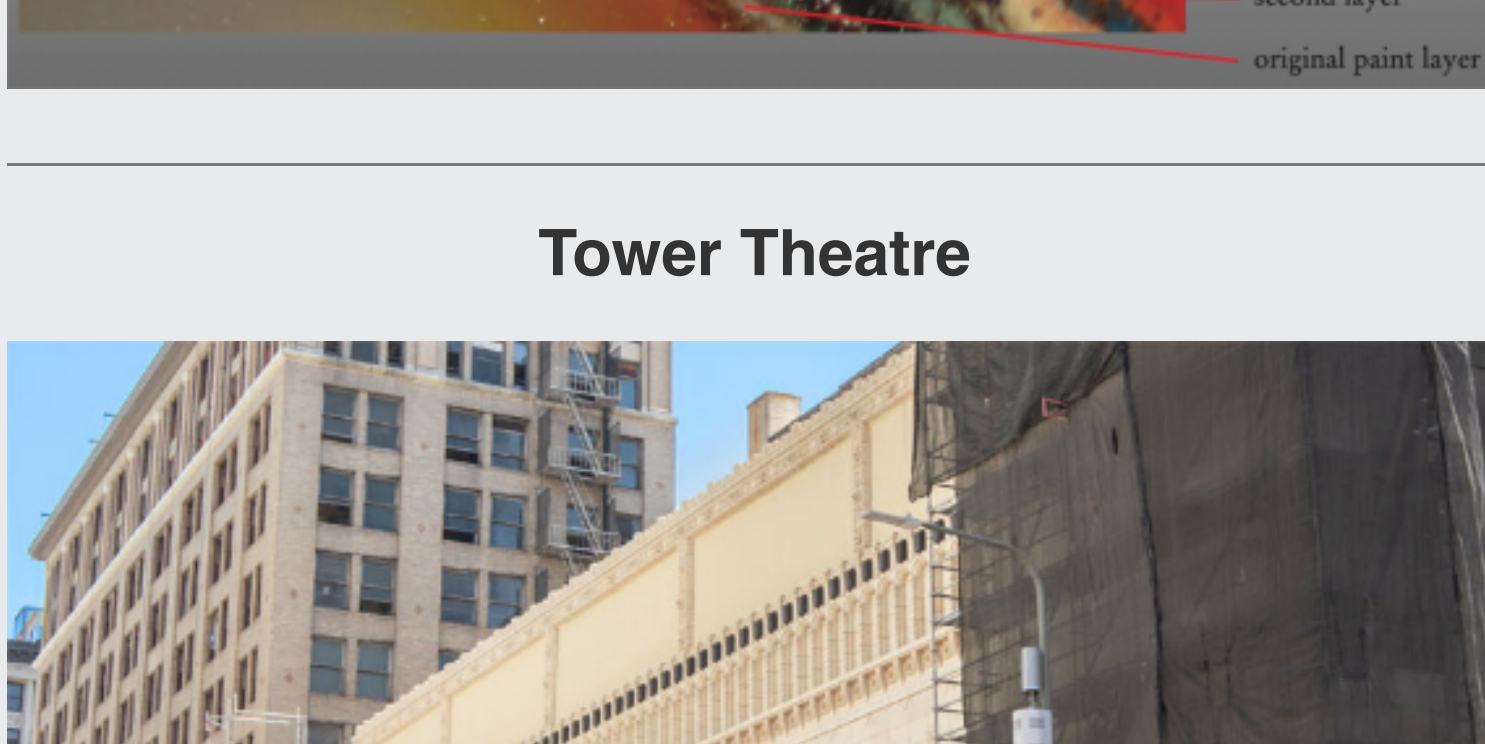
Following consultation with Friends of the Rialto, the owners brought in KC Restoration to undertake color analysis of key areas of the front of the building, including the vertical sign where they identified 17 different layers of paint in colors including red, blue, yellow, green, and gold. The City of South Pasadena agreed a proposed color scheme, based upon the original colors used in 1925, which has subsequently been applied to the building.

Below the windows of the retail storefronts on either side of the theatre's entrance, original Batchelder tiles were found under layers of paint and brick and are being restored where possible and replicated where damaged or missing.

The neon lighting on the marquee and vertical sign are to be replaced in a project which is the responsibility of the tenant, church group Mosaic.



Tower Theatre



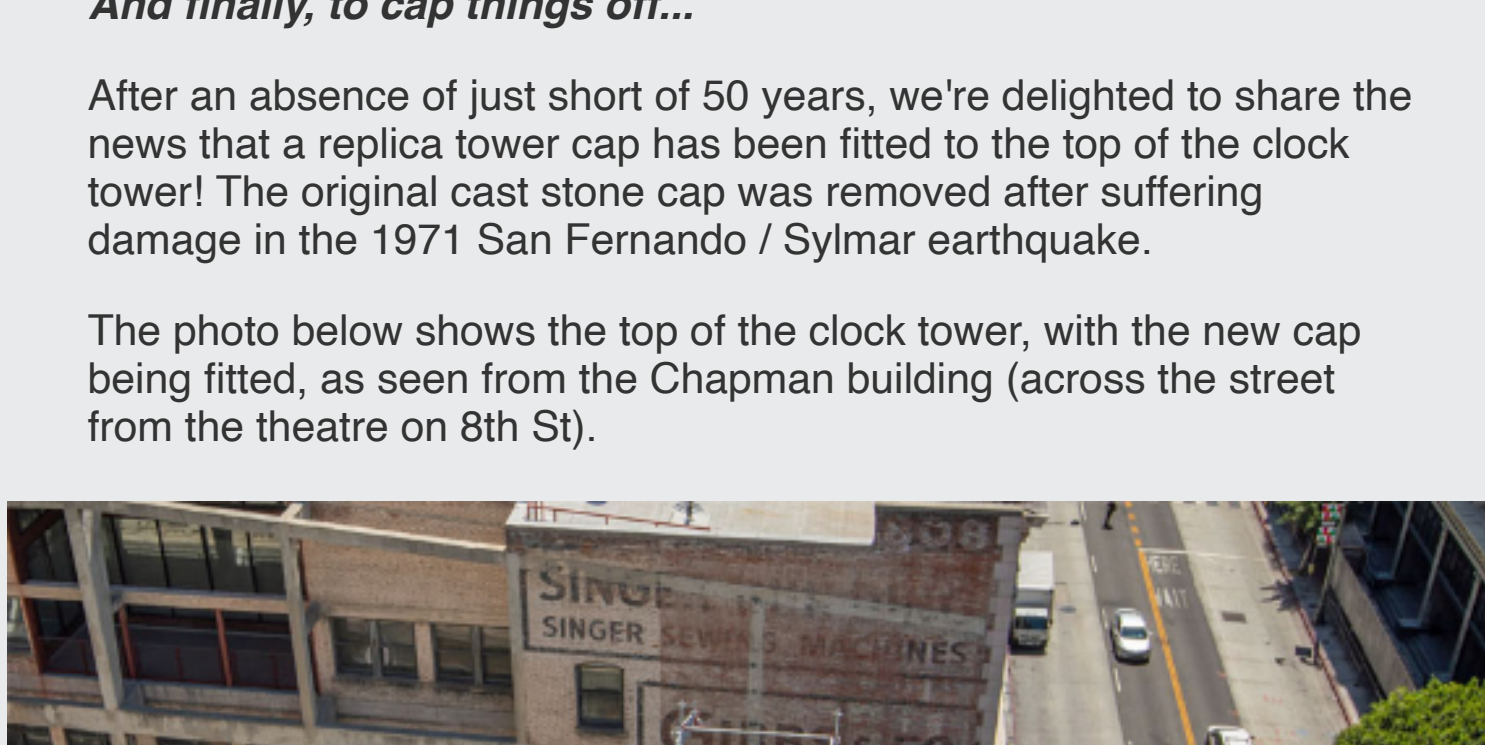
Work continues on the flagship Apple Store at the Tower Theatre in downtown Los Angeles. Much of the 8th St facade was revealed last week following completion of terracotta wall tile restoration.

LAHTF is in contact with the design team and architects running the project and is closely monitoring progress.

And finally, to cap things off...

After an absence of just short of 50 years, we're delighted to share the news that a replica tower cap has been fitted to the top of the clock tower! The original cast stone cap was removed after suffering damage in the 1971 San Fernando / Sylmar earthquake.

The photo below shows the top of the clock tower, with the new cap being fitted, as seen from the Chapman building (across the street from the theatre on 8th St).



LAHTF Memberships

Household, Patron, Artist, Producer, Basic

Not a member? Join today! If you are not a LAHTF member yet or need to renew, this is the time to do it. We have a lot more in store for 2020!

[BECOME A MEMBER](#)

Support LAHTF with \$20 for 2020

The Los Angeles Historic Theatre Foundation rises to its crucial mission to protect, preserve, restore and sustain the operation of LA County's historic theatres on the strength of the generosity of its supporters. Your support can help the LAHTF save and use irreplaceable theatres by filling historic stages and screens with great entertainment and their beautiful auditoriums with large and appreciative audiences.

As we continue to make our way through 2020, please join us in our \$20 for 2020 campaign. Your continued support means everything to us and every dollar counts. Please consider making an additional tax-deductible gift today. Thank you!

[DONATE NOW](#)

Follow LAHTF on social media:

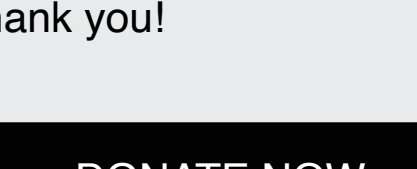


Photo Credits: Avalon Theatre: Catalina Island Company; Crest Westwood: UCLA; Eagle Theatre: Vidiots; Grand Theater & Tower Theatre: LAHTF Photo Archives; Rialto Theatre: Friends of the Rialto & KC Restoration.

Los Angeles Historic Theatre Foundation (LAHTF) uses Vendini for ticketing, marketing, and box office management

Los Angeles Historic Theatre Foundation (LAHTF) - PO BOX 79172, Los Angeles, CA, (323) 445-7135

Vendini, Inc. - 55 Francisco Street, Suite 350, San Francisco, CA, +1 (800) 901-7173

[Unsubscribe](#)